



**Intelligent network Appliance with Intel Atom™ Bay-Trail Single / Quad Core E3815/3845**

LEX launches 31380D series SBC with built-in 4 x Intel i210 Giga LAN ports as a high-performance, reliable and flexible platform to develop Network solution as Server, VPN, Firewall, Gateway, NAS, NAD and Enhanced Thin Clients applications. LEX 31380D provides customers a robust and compact computing system with an industrial design and built-in I/O to handle diverse applications.

**31380D Spec:**

**Spec outline**

1. Intel® Bay Trail-I E3815 1.46GHz (Single core) / E E3845 1.91GHz (Quad core) CPU/ chipset
2. MB size 3.5" 146 x 102mm
3. Graphic: Intel Bay Trail-I Integrated Graphics chipset
4. Memory: DDR3L 2G/4G Onboard
5. Features ; VGA, HDMI, 4 x Intel i210 Gb Ethernet, 7 x USB, 2 x COM, 2 x Mini PCIe, 1 x SIM card socket

[MB Data download](#)

**Chassis**



31380D

+



**Twitter**

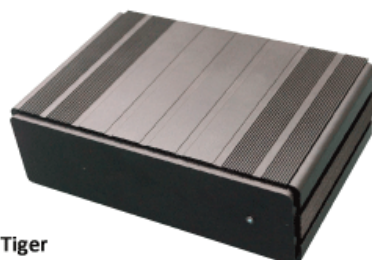
**Twitter** Dimension: 210W x 125D x 55H

- Wide Range Temperature Solution
- Anti-vibration Solution



31380D

+



**Tiger**

**Tiger** Dimension: 190.8W x 130D x 58.8H

- Wide Range Temperature Solution
- Anti-vibration Solution
- Rich IO ports, Heavy Duty Solution